

San Joaquin County Annual STD Report

Data for 2010

Table 1: STDs in San Joaquin County, 2009 and 2010

	2009	2010
Gonorrhea	561	714
Chlamydia	3481	3719
Syphilis	65	70
1 & 2	25	33
Early latent	8	10
Unk. Latent	8	9
Late latent	24	16
Neuro	0	1
Congenital	0	1

Figure 1. STD cases in SJC by city of residence, January-December 2010

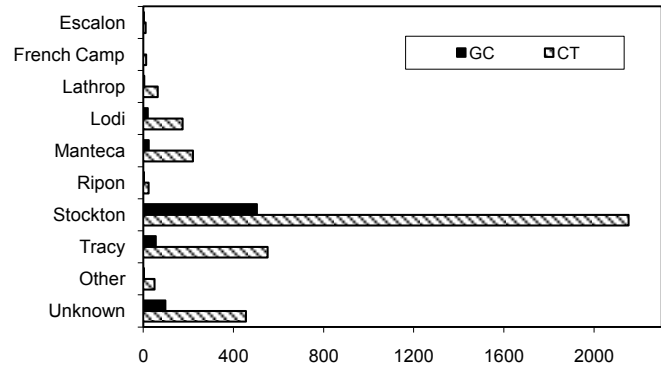


Figure 2. Monthly GC trends for SJC

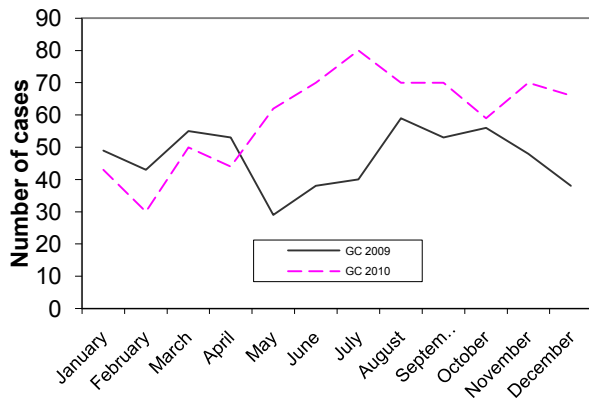


Figure 3. Monthly CT trends for SJC

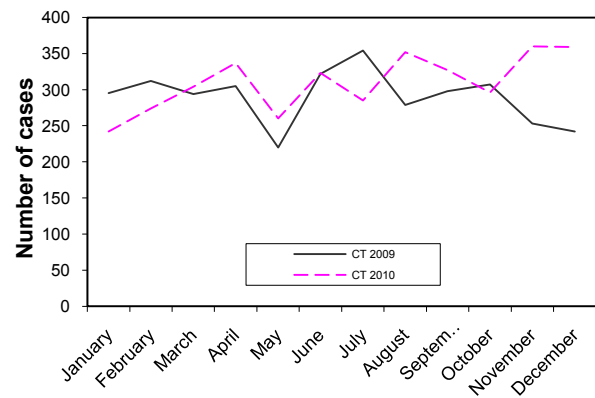


Table 2: Gonorrhea cases in SJC by age and gender, January-December 2010

Gonorrhea			
Age category	Female	Male	Total
0-4	0	0	0
5-9	0	0	0
10-14	6	3	9
15-19	135	67	202
20-24	121	90	211
25-29	55	84	139
30-34	28	32	60
35-39	12	28	40
40-44	9	15	24
45-54	6	9	15
55-64	1	5	6
65+	0	0	0
unknown	1	2	3
TOTAL	374	335	709

*5 cases were of unknown gender

Table 3: Chlamydia cases in SJC by age and gender, January-December 2010

Chlamydia			
Age category	Female	Male	Total
0-4	0	0	0
5-9	0	0	0
10-14	21	10	31
15-19	939	261	1200
20-24	949	412	1361
25-29	342	278	620
30-34	131	94	225
35-39	78	53	131
40-44	25	20	45
45-54	20	20	40
55-64	5	7	12
65+	0	0	0
unknown	16	12	28
TOTAL	2526	1167	3693

*26 cases were of unknown gender

Note: Morbidity is based on the date of report. Totals may change due to additions and/or deletions from the database.